

**USERS AND DOCUMENTATION**  
**ACROBAT PULSE RECOGNITION CD**



**Acoustic Pulse Recognition (APR)  
(ET1522L-AUWB-\*)**

**Software Installation  
Use APR CD**

**CD Contents**

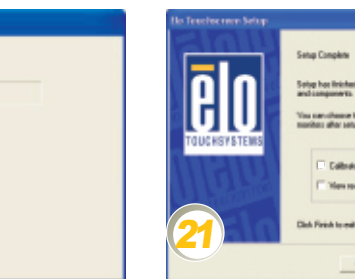
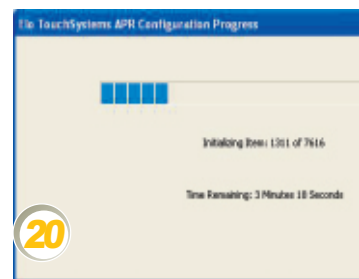
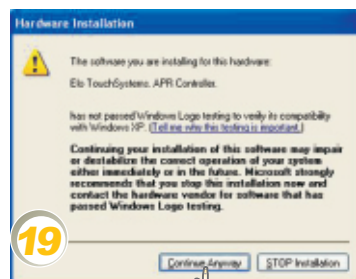
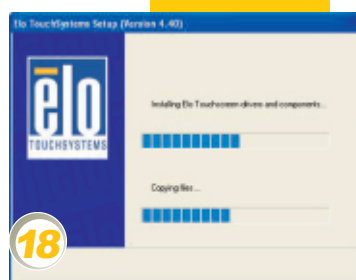
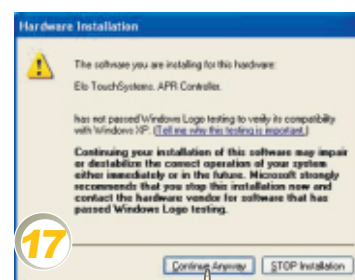
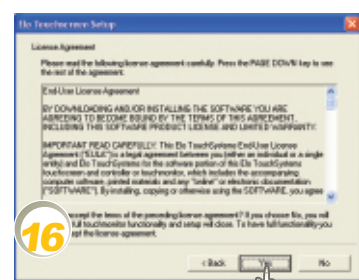
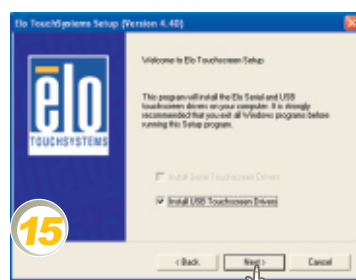
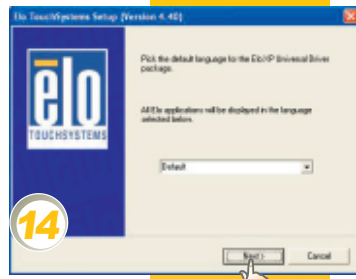
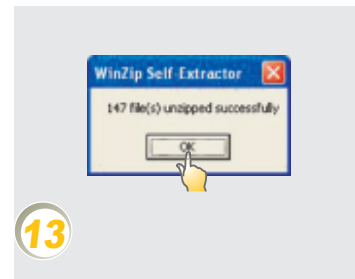
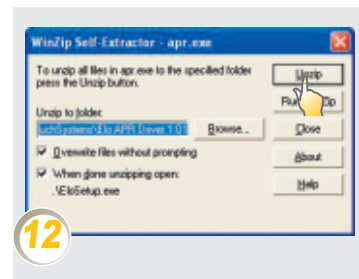
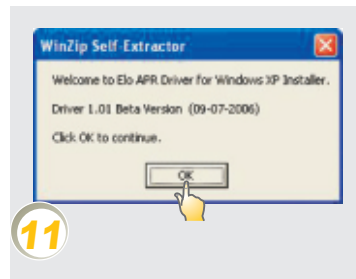
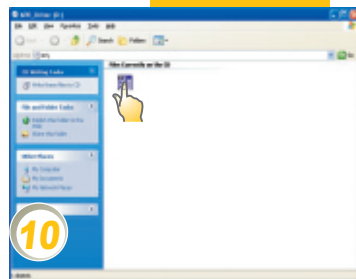
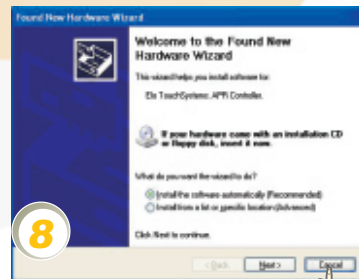
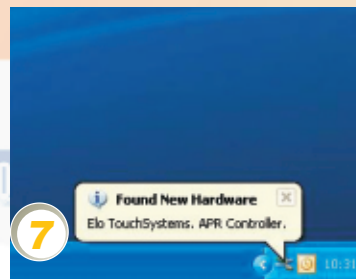
- APR DRIVER
- ADOBE READER 7.0

E699172 REVD  
SOFTWARE, APR DRIVER  
© 2007 TYCO ELECTRONICS  
All rights reserved.

**DO NOT INSTALL THIS SOFTWARE  
ON WINDOWS VISTA**



With Optional  
Magnetic Stripe  
Reader



**NO NEED  
TO CALIBRATE.  
USE FACTORY  
DEFAULTS!**

**Quick Installation Guide**

**1522L 15" LCD Multifunction Touchmonitor, 3000 Series  
(Optional User Installable Magnetic Stripe Reader Available)**

© 2007 Tyco Electronics.



[www.elotouch.com](http://www.elotouch.com)



Revision B  
P/N E151771

**North America**  
Elo TouchSystem  
301 Constitution  
Drive, Menlo Park,  
CA 94025  
[www.elotouch.com](http://www.elotouch.com)

**Elo Technical Support**  
Online self-help:  
[www.elotouch.com/go/websupport](http://www.elotouch.com/go/websupport)  
Technical Support contacts in your region:  
[www.elotouch.com/go/contactsupport](http://www.elotouch.com/go/contactsupport)

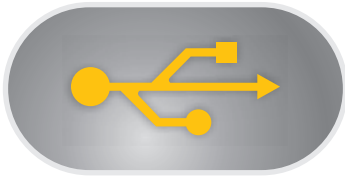
**Europe**  
Tel +32 (0)16 35 21 00  
Fax +32 (0)16 35 21 01  
elosales@elotouch.com

**Asia-Pacific**  
Tel +81 (45) 478-2161  
Fax +81 (45) 478-2180  
[www.tps.co.jp](http://www.tps.co.jp)

**Latin America**  
Tel 1-305-428-5210  
Fax 1-305-717-4909  
[www.elotouch.com.ar](http://www.elotouch.com.ar)

For current Elo news, product updates and announcements, register to receive our TouchMonitor newsletter at [www.elotouch.com/go/news](http://www.elotouch.com/go/news)





ET1522L-3UWB-  
ET1522L-7UWB-  
ET1522L-8UWB-  
ET1522L-9UWB-\*

